

---

**IRTH**<sup>TM</sup>

---



*Chopping a File with FME*

*July 2003*



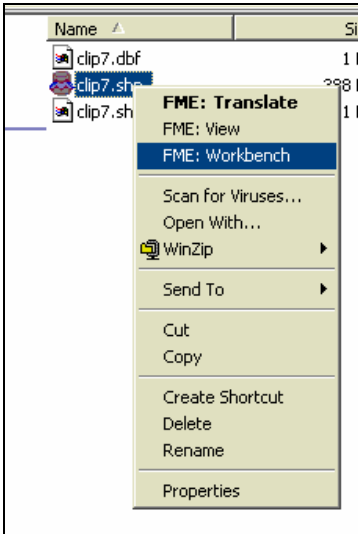
Table of Contents

How IRTH to IRTH Protocol Functions **Error! Bookmark not defined.**

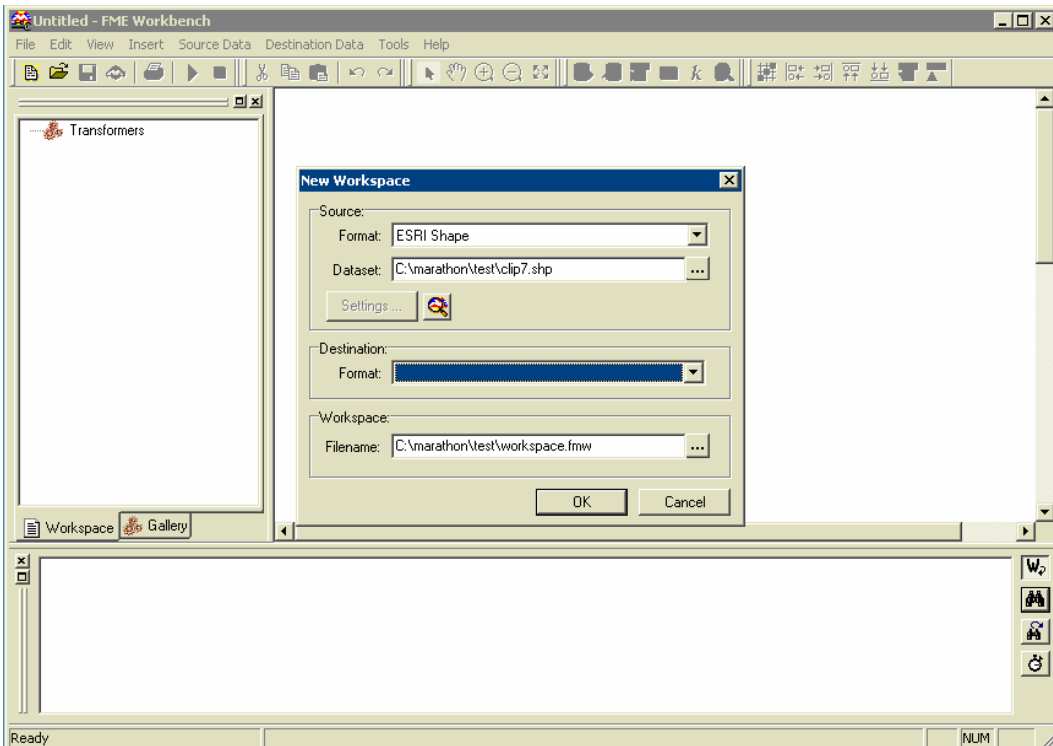


## Chopping a File with FME

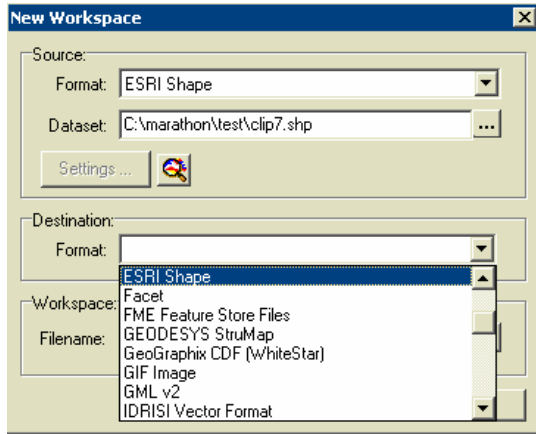
1. Right click on the file you wish to edit. In this example we use *clip7.shp*.
2. Select FME Workbench.



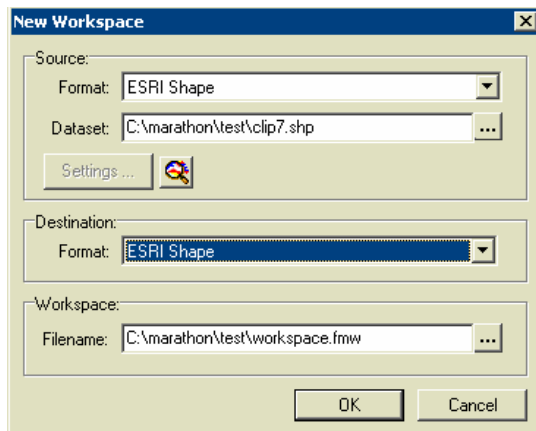
3. FME workbench opens.



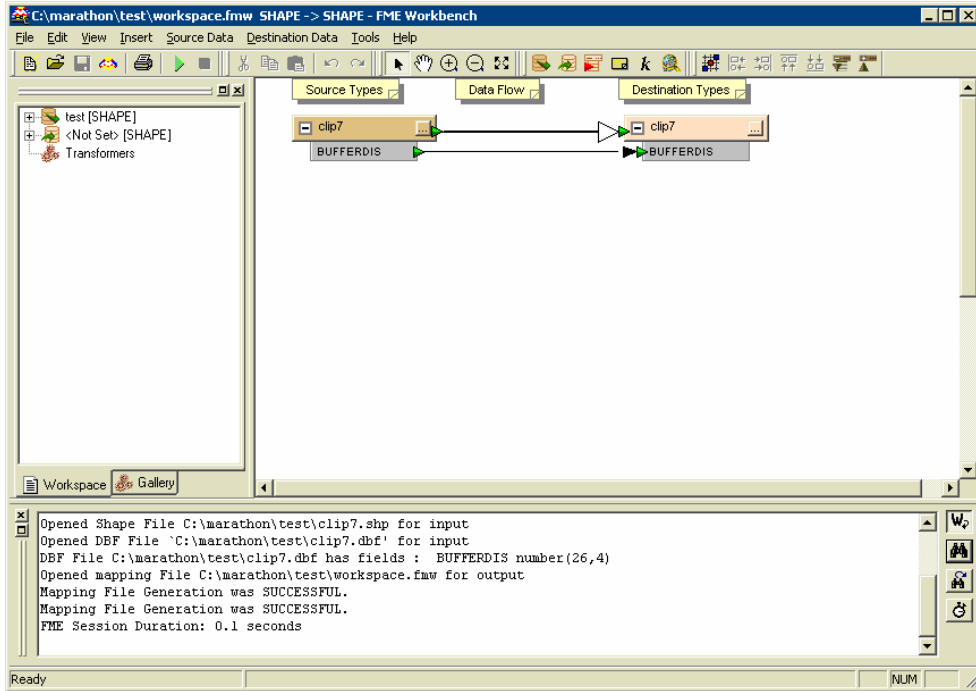
- For the format in the destination box, select the format shown in the Source box (in our example, *ESRI Shape*).



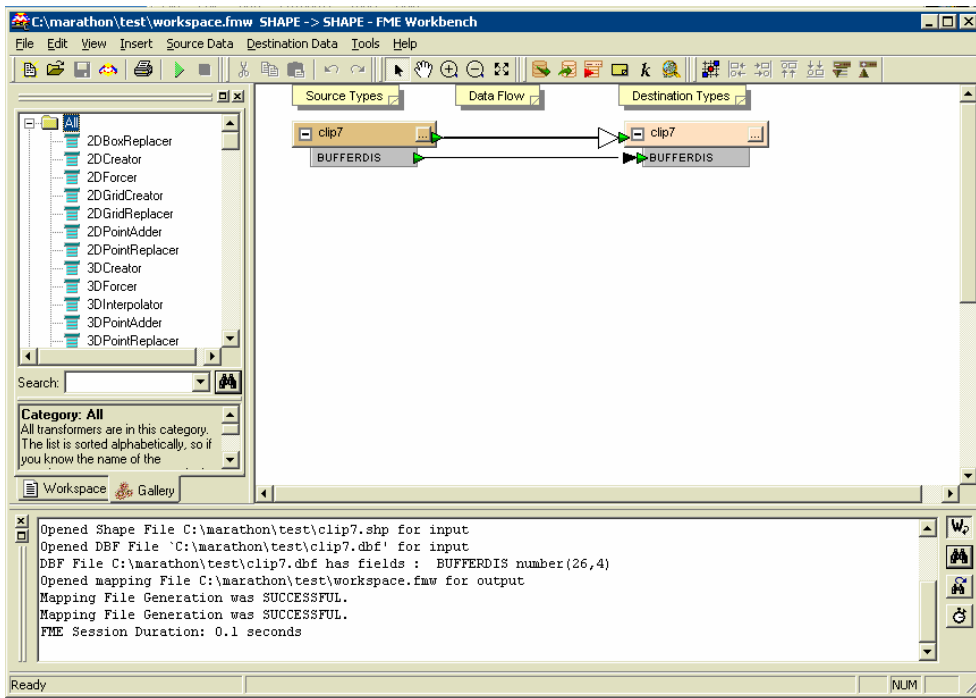
- Once selected click OK.



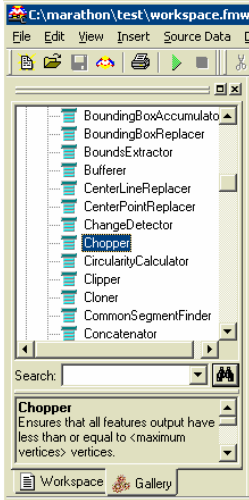
- FME will now open your shape file.



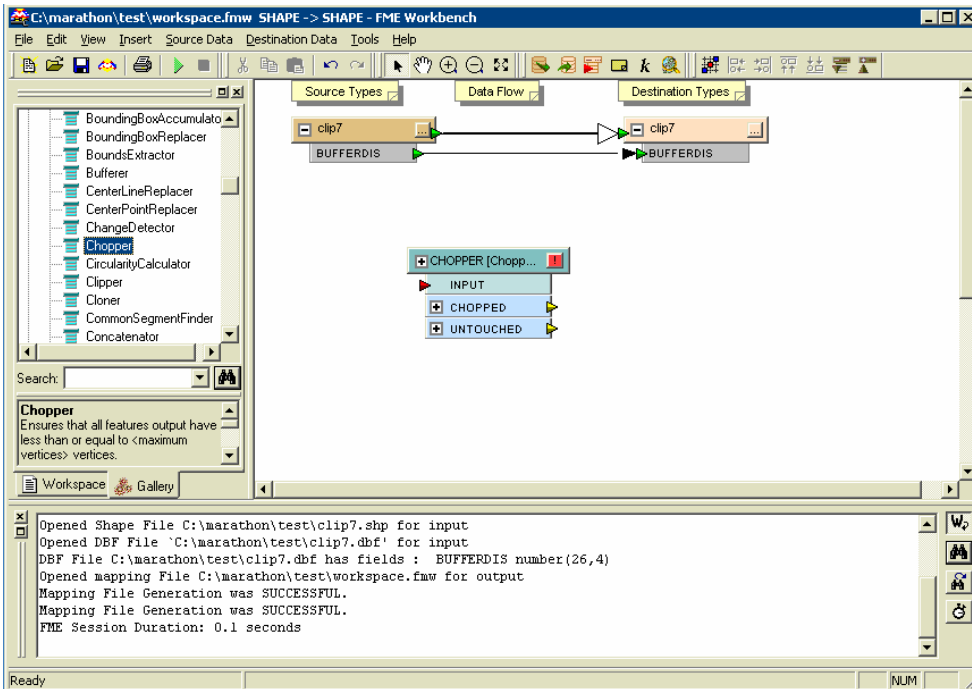
7. Now you need to add the chopper. Click the Gallery tab beside Workspace.



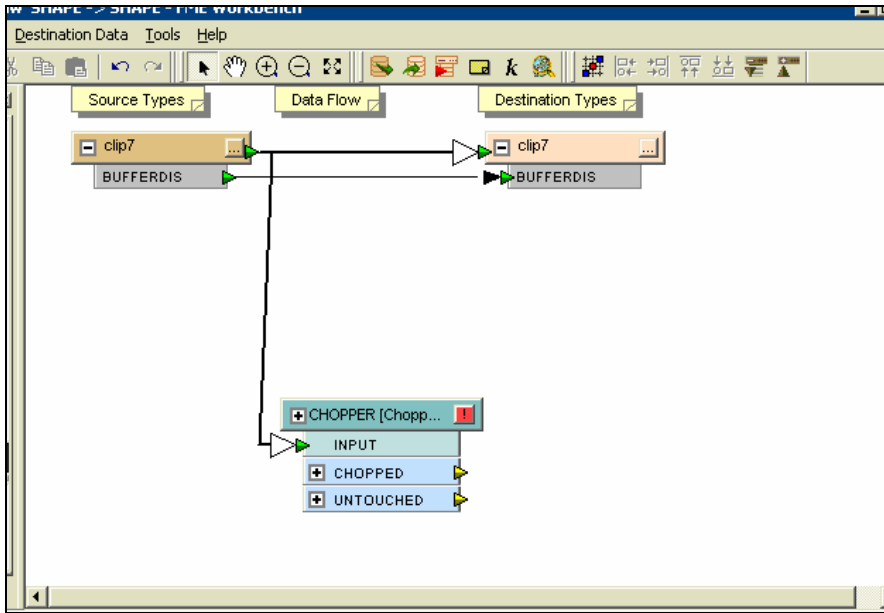
8. Expand the All folder and find Chopper.



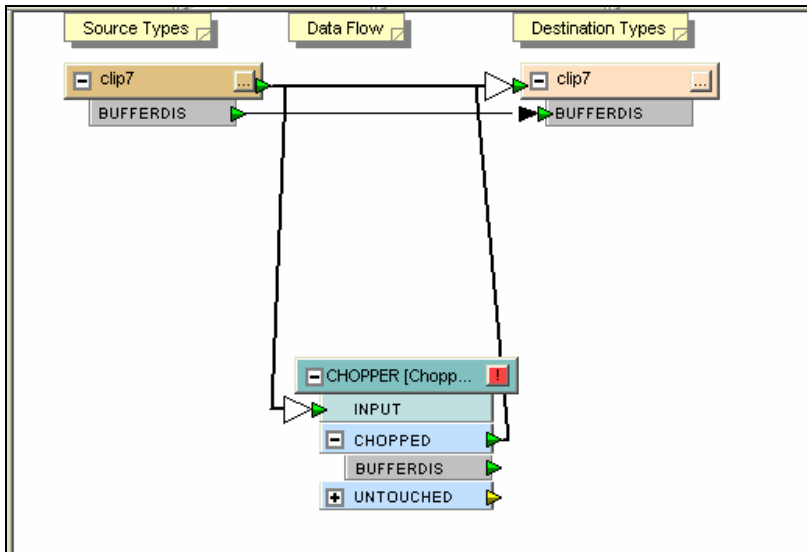
9. Single click Chopper and drag it to the workspace.



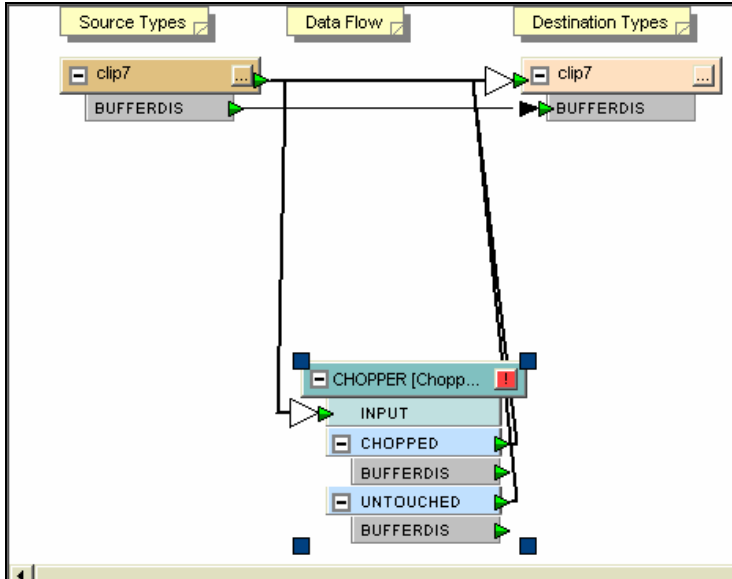
10. Now you need to link the Chopper to the shape file. Take the Red arrow from the Chopper and drag it the clip7 Source type.



11. Take one of the two yellow arrows and drag them to the Destination type clip 7.



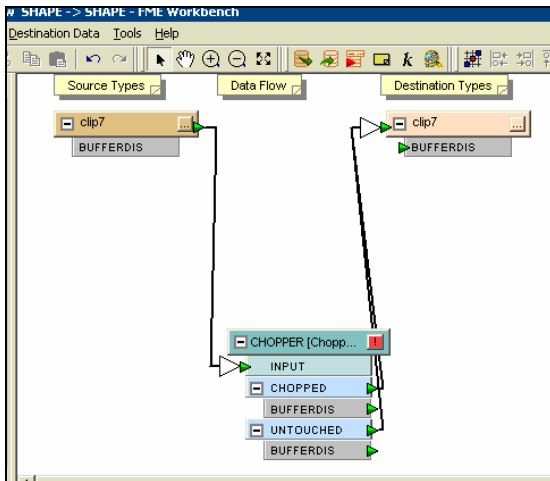
12. Repeat for the other arrow.



13. Now you need to remove one arrow going from Clip7 (Source) to Clip7 Destination.

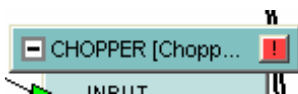


14. Click on the arrow and then click delete.

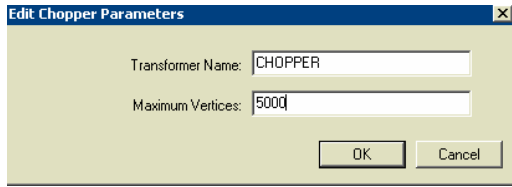


15. Your end result will look like the above.

16. Enter the max number of Vertices. To do this, click the red !

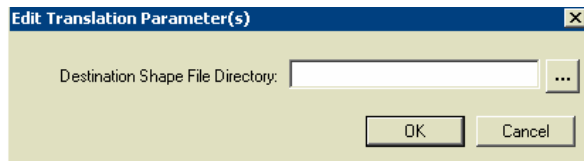
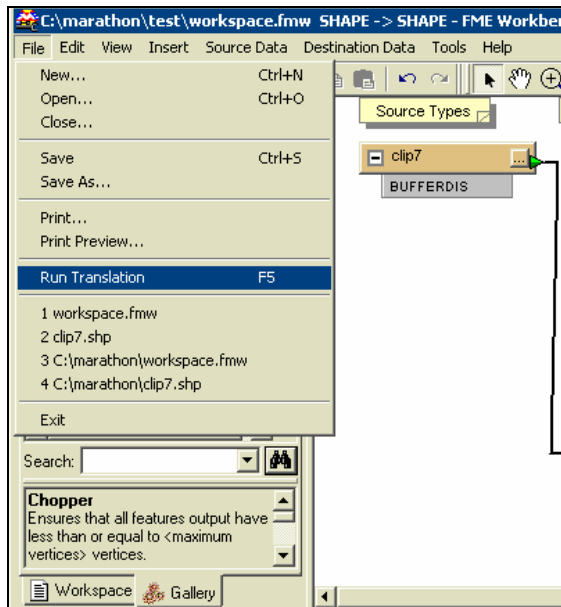


17. Enter the amount of Vertices per polygon.

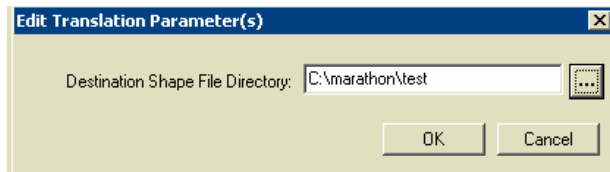


18. Click OK.

19. Now you will run the translation. Choose File, then Run Translation:



20. Browse to the directory where you want the output to go.



21. Click OK. You will see the following results. In our example, we split this file up into 15 polygons with no more than 5000 vertices and merged them as one.

Features Read Summary

```
-----  
clip7 1  
-----  
Total Features Read 1  
-----  
-----
```

Features Written Summary

```
-----  
clip7 (clip7) 15  
-----  
Total Features Written 15  
-----
```

Translation was SUCCESSFUL (15 feature(s)/24733 coordinate(s) output)  
FME Session Duration: 2.7 seconds