

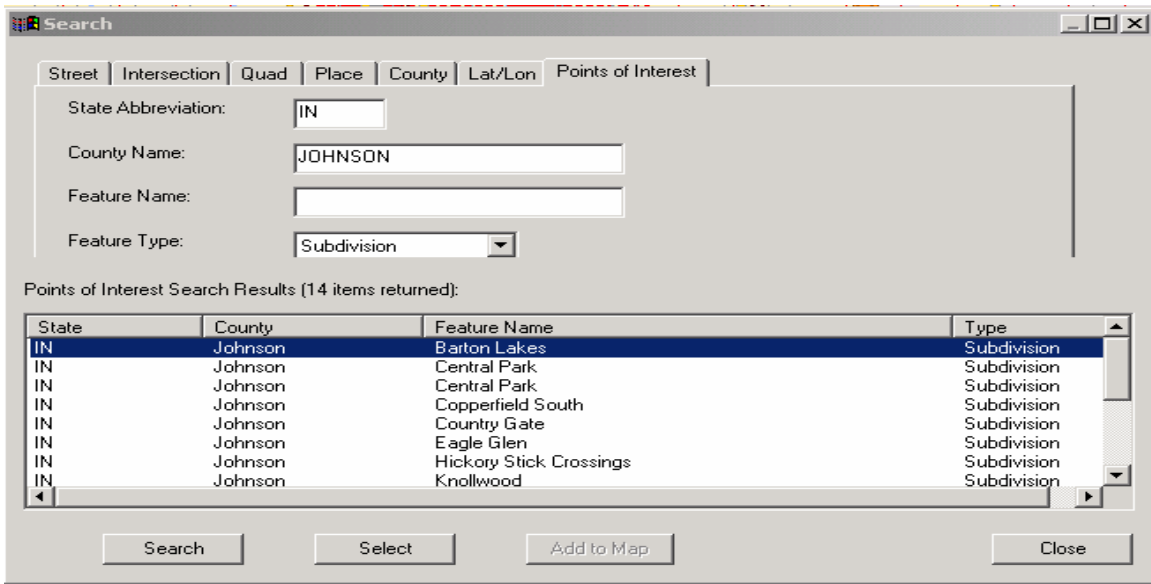


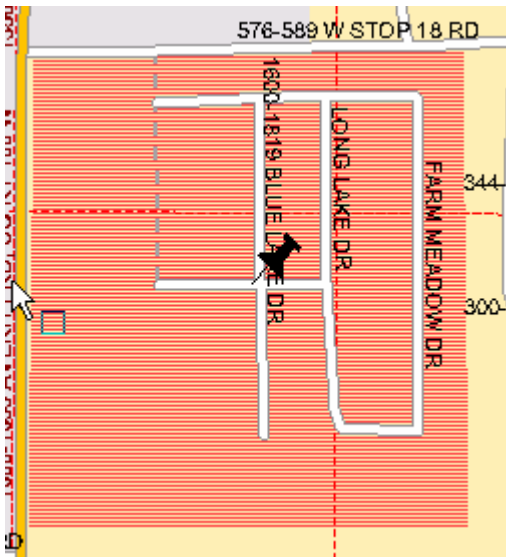
## FINDING AND MAPPING SUBDIVISIONS

IUPPS has added a new Feature Type to the Points of Interest search  function. This Feature Type is called Subdivision. Currently we have added to the map over 200 subdivisions across the State of Indiana, and will continue to add these subdivisions to the map as accurate information is obtained. The following explains how the feature can be utilized:

- If you cannot locate a dig site that you know is in a subdivision, then go to the map and click on the search function 
- Click on the Points of Interest Tab.
- Select the Feature Type called Subdivision and click on the Search button.
- A list of all subdivisions that we have created in that County will be listed.
- If you see the subdivision that you are looking for, then highlight the name, click on Select and then click on Add to Map. This example shows the Subdivision called Barton Lakes in Johnson County.



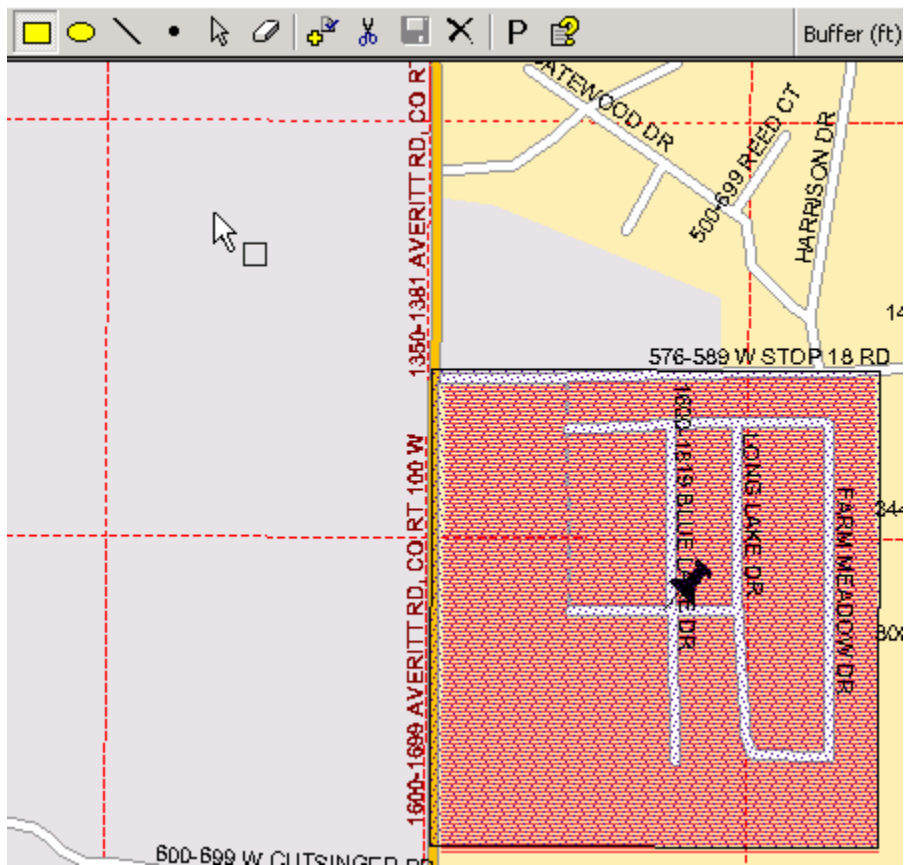
- The Subdivision shows up in an orange/red color and has a push pin in the middle of it.
- If you hover (see note) over the area with your mouse the name of the Subdivision will also appear.



Note: Turn off Dig and Grid Options

- Once you have confirmed that the dig site is correct (eg. look at surrounding streets, etc.), then utilize the drawing tools to select the Subdivision as your dig site.

- After you have drawn an area around the Subdivision, then click on the Append  button.



- Then click on the Save  button.

