

Getting Ready for Web Ticket Training

To utilize the Irth Web Ticket Entry program, you must have Internet Explorer 5.5 or above. To determine what version you have, go to your Microsoft Internet Explorer browser and click on the HELP option, and select *About Internet Explorer*. A screen will be displayed that let's you know what version you have on your computer.

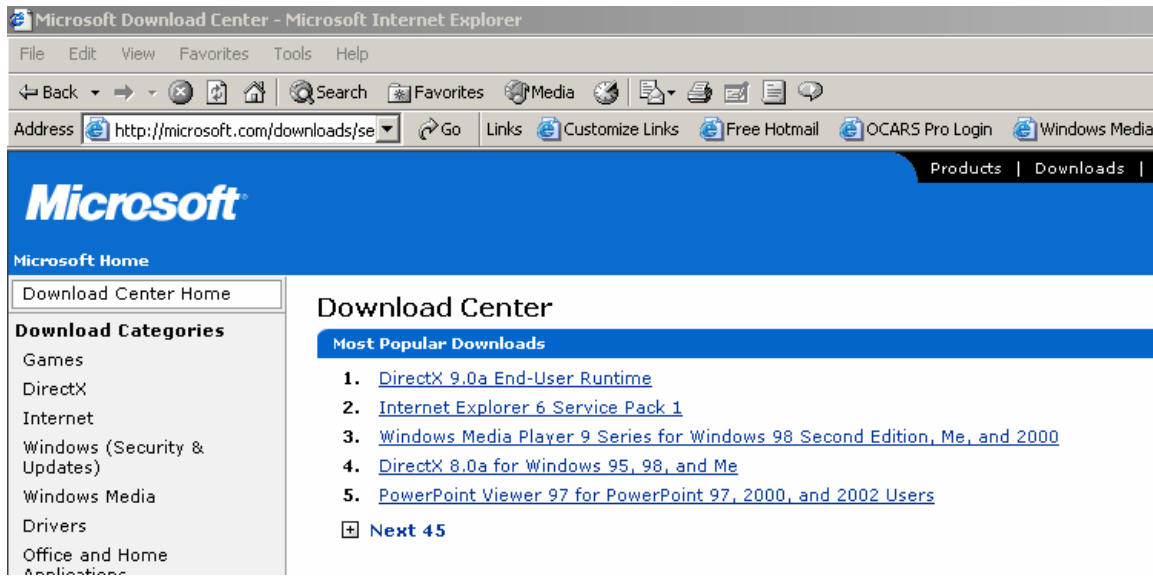


If you have a version that is lower than 6.0, then you need to do ***one*** of the following:

- Upgrade to 6.0 or
- Download the Service Pack 2

This can be accomplished by going to the Microsoft website (www.microsoft.com). After you have reached the site, go to the Downloads section.

You can then choose to upgrade to 6.0, or download Service Pack 2 (contains a parsing tool that you'll need for mapping).



Note:

- You must have Administrative rights on your computer to download items to your computer.
- After you download either 6.0 or the Service Pack, you will have to install these updates. Therefore, make sure that you determine where the download is being stored so you can run the Setup/Install program.

EXAMPLE

Here is an example of downloading Internet Explorer 6.0:

After you have selected the download you want, then this screen will appear. Click on the Download link.

Internet Explorer 6 Service Pack 1

Download Internet Explorer 6 Service Pack 1 (SP1), which includes a full installation of Internet Explorer 6, to update the core technologies of the browser.

Quick Info	
File Name:	ie6setup.exe
Download Size:	480 KB - 79324 KB
Date Published:	9/9/2002
Version:	6_sp1

Internet Explorer 6 Service Pack 1
English

[Download](#)

Change language

English

The following File Download message will appear. Click on the Save button.

Internet Explorer 6 Service Pack 1

Download Internet Explorer 6 Service Pack 1 from Microsoft technologies of the

Quick Info

File Name:

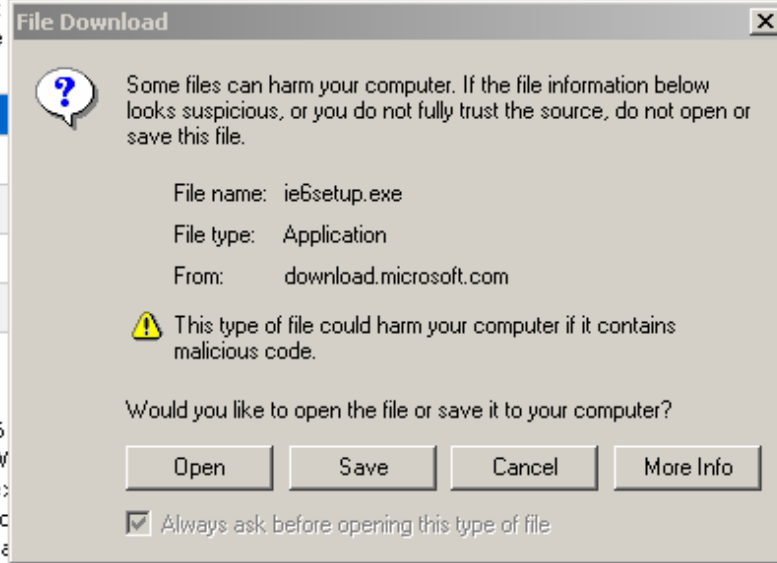
Download Size:

Date Published:

Version:

Overview

Internet Explorer 6 Service Pack 1 (SP1) is available for Windows Home Edition and Windows XP Home Edition. It provides a flexible browsing experience on Windows XP, Windows Vista, and Windows NT® 4.0 Service Pack 6.



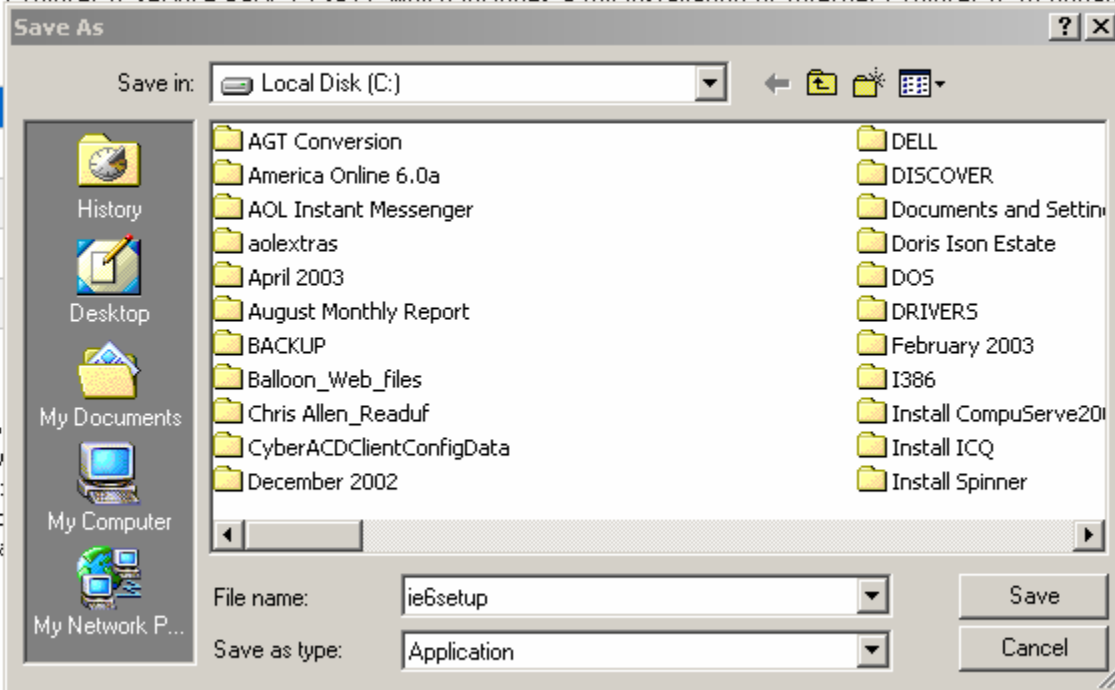
Internet Explorer 6

Windows® XP
reliable, and
users of
d Windows

Make sure that you note where the file is being downloaded, and the name of the file you are downloading. In this example we are downloading the file to the C:/ drive, and the filename is ie6setup.

Internet Explorer 6 Service Pack 1

Internet Explorer 6 Service Pack 1 (SP1) which includes a full installation of Internet Explorer 6, to update the c... the



Expl
Pack

ownl

angu

esour

: Apr

stive I

t Exp

n Sec

t Exp

ups

t Exp

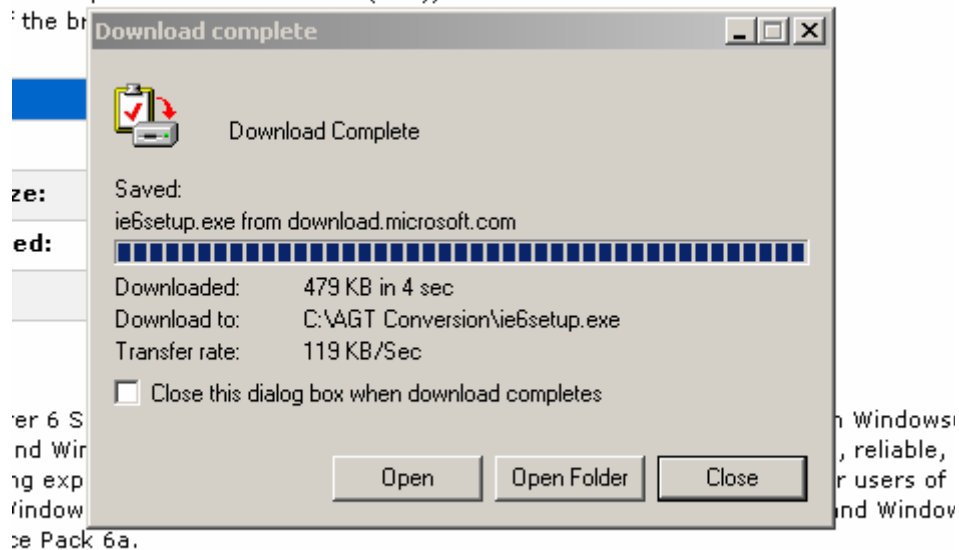
o Dep

ad th

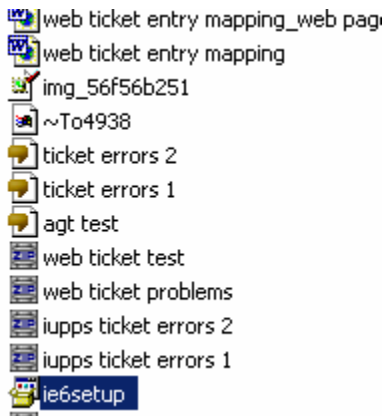
After the download is complete, the following screen will appear.

Internet Explorer 6 Service Pack 1

Internet Explorer 6 Service Pack 1 (SP1), which includes a full installation of Internet Explorer 6 and the browser's security features.



Click on the Open button to find the setup program.



Double click on the setup program (will be highlighted in blue), and just follow the instructions to install the update.

After you have upgraded your Internet Explorer, then go to the IUPPS website, which is www.iupps.org

Indiana Underground Plant Protection Service Inc

Home
Mission Statement
Web Ticket Entry
Legislation
Membership
Member List
2003 Holiday List

Web Ticket Entry

All users must sign a Web Ticket Entry Users Agreement and be trained on the use of the program by an IUPPS Web Ticket Entry Trainer. Users must follow all guidelines set forth in the [Contractor Handbook](#). Failure to do so will result in cancellation of the locate request, and termination of Web Ticket Entry privileges.

[Enter Here](#)

[Click Here](#)

Click on Web Ticket Entry.

[Web Ticket Entry](#)

Indiana Underground Plant Protection Service Inc

Home
Mission Statement
Web Ticket Entry
Legislation
Membership
Member List
2003 Holiday List
Fax-a-Locate
Staff Directory
Board Directory

Web Ticket Entry

All users must sign a Web Ticket Entry Users Agreement and be trained on the use of the program by an IUPPS Web Ticket Entry Trainer. Users must follow all guidelines set forth in the [Contractor Handbook](#). Failure to do so will result in cancellation of the locate request, and termination of Web Ticket Entry privileges.

[Enter Here](#)

[Click Here](#)

Now Available Instructions on the New Web Ticket Mapping

[Web Ticket Entry Manual](#)

[Computer Requirements](#)

[Mapping Tool Instructions](#)

In addition to the training over the phone we will be holding web Ticket Entry Training at our

Open and print out the training Material (Web Ticket Entry Manual and Mapping Tool Instructions, etc.).

Then click on the following:

[Enter Here](#)

[Click Here](#)

The following screen will appear:

**IUPPS apologizes for any inconvenience this is ca
your patience and cooperation. Thank you!**

1

Irth Login

User Name

Password

To view the maps on the Irth Internet, you must use Internet Explorer 5.0 or high

To test this display and download the controls, view the [Irth Map Display](#)

To download the Irth Mapping Software, click on the Irth Map Display Link.

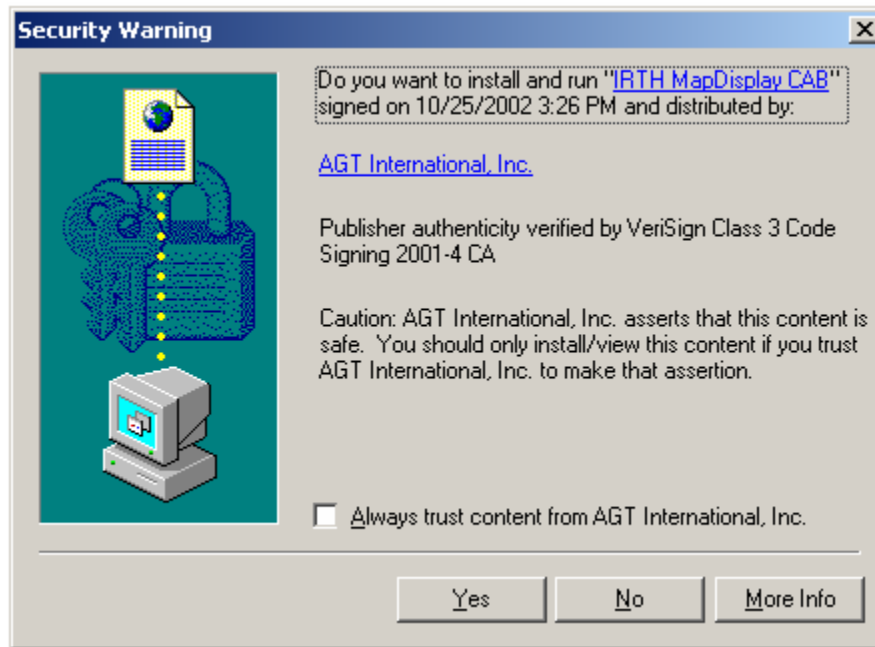
Internet Explorer 5.0 or h
the [Irth Map Display](#)

If the software has not been downloaded you will, the Irth Map Display Cab
download will appear.

When you can view the map display, [return to the welcome page.](#)

If you do not see the map display and you are NOT using Netscape, refresh the page and accept the installation of the Active X controls. These controls are required to view the maps online.

If you continue to have problems please notify the One Call Center.

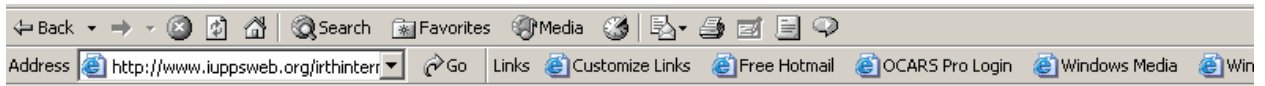


Click on "Always trust content from AGT International, Inc." and then click on Yes.

The mapping software will download. Depending on the type of internet connection you have, this could take awhile to download (e.g. up to half hour).

After the software has downloaded you can test it by returning to the login page, and clicking on the Irth Map Display link.

If the download has installed correctly, then you will see the following screen.



When you can view the map display, [return to the welcome page](#).

If you do not see the map display and you are NOT using Netscape, refresh the page and accept the installation of the Active X co required to view the maps online.

If you continue to have problems please notify the One Call Center.

